

# ELK FLATS STREAM RESTORATION PROJECT

## GENERAL NOTES

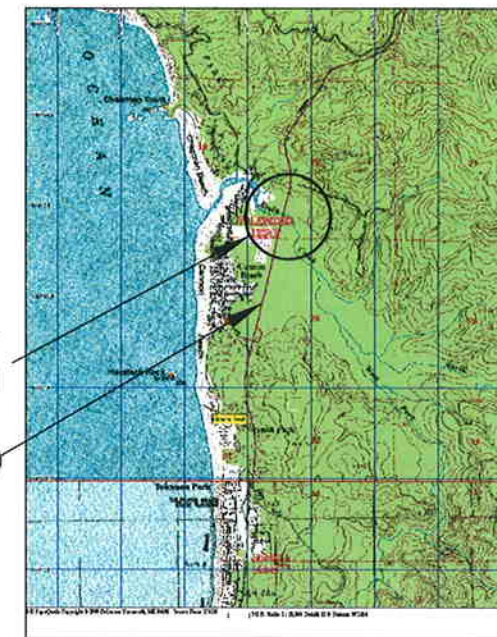
- ATTENTION CONTRACTORS: OREGON LAW REQUIRES YOU TO FOLLOW RULES ADOPTED BY THE OREGON UTILITY NOTIFICATION CENTER. THOSE RULES ARE SET FORTH IN OAR 952-001-0010 THROUGH OAR 952-001-0090. YOU MAY OBTAIN COPIES OF THE RULES BY CALLING THE CENTER. (NOTE: THE TELEPHONE NUMBER FOR THE OREGON UTILITY NOTIFICATION CENTER IS 1-800-332-2344. AT LEAST TWO (2) BUSINESS DAYS PRIOR TO CONSTRUCTION, THE CONTRACTOR SHALL NOTIFY THE OREGON UTILITY NOTIFICATION CENTER OF THE DATE AND LOCATION OF THE PROPOSED CONSTRUCTION, AND THE TYPE OF WORK TO BE PERFORMED.
- ALL EXISTING FACILITIES TO BE MAINTAINED IN-PLACE BY THE CONTRACTOR UNLESS OTHERWISE SHOWN OR DIRECTED. CONTRACTOR TO LEAVE EXISTING FACILITIES IN AN EQUAL OR BETTER THAN ORIGINAL CONDITION AND TO THE SATISFACTION OF THE PROJECT SUPERVISOR.
- EXISTING UTILITY LOCATIONS SHOWN ARE APPROXIMATE ONLY. CONTACT UTILITY COMPANIES FOR PREMARKING. POTHOLE ALL UTILITY CROSSINGS BEFORE CONSTRUCTION TO PREVENT GRADE AND ALIGNMENT CONFLICTS.
- TECHNICAL SPECIFICATIONS FOR CONSTRUCTION ARE TO FOLLOW THE MOST CURRENT EDITION OF THE AMERICAN PUBLIC WORKS ASSOCIATION (APWA) SPECIFICATIONS. SEE SPEC'S FOR CONSTRUCTION METHODS AND OTHER NOTES PERTINENT TO THIS PROJECT.
- ALL FINAL DESIGNS AND SPECIFICATIONS TO BE APPROVED BY LOCAL AGENCY AND OTHER ASSOCIATED UTILITIES PRIOR TO ANY CONSTRUCTION.
- ALL SITE WORK SHALL CONFORM TO DSL AND U.S. ARMY CORP OF ENGINEERS PERMIT FOR THE PROJECT.
- PROJECT WILL REQUIRE IN-WATER EXCAVATION.
- IN-WATER WORK PERIOD IS JULY 1 - SEPTEMBER 15.
- CONTRACTOR SHALL ERECT AND MAINTAIN BARRICADES, WARNING SIGNS, TRAFFIC CONES PER ODOT REQUIREMENTS. ACCESS TO EXISTING DRIVEWAYS TO BE MAINTAINED AT ALL TIMES.

## PROJECT TEAM

- SURVEYOR/ENGINEER**  
HLB Otak, INC.  
ATTN: JEFF HARRINGTON, P.E.  
4253-A HWY 101 NORTH  
SEASIDE, OR 97138  
(503) 738-3425  
(503) 738-7455 (FAX)
- PROJECT SUPERVISOR**  
ATTN: DOUGLAS DEUR, PhD  
WETLAND CONSULTANT  
(503) 805-1266
- OWNER**  
COLUMBIA RIVER ESTUARY STUDY TASKFORCE (CREST)  
ON BEHALF OF THE ECOLA CREEK WATERSHED COUNCIL  
ATTN: MADELINE DALTON  
750 COMMERCIAL ST., ROOM 205  
ASTORIA, OR 97103  
(503) 325-0437  
(503) 325-0459 (FAX)

## SHEET INDEX

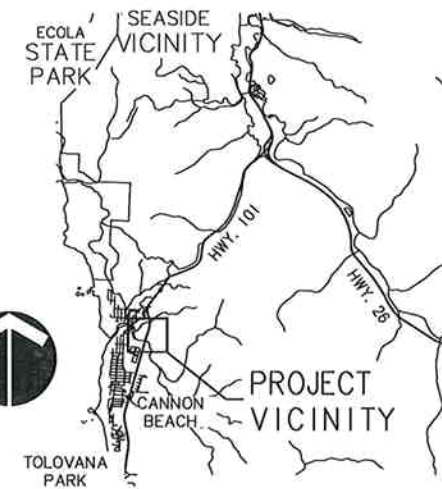
- COVER SHEET
- EROSION CONTROL NOTES
- GRADING PLAN
- DETAILS & PROFILE



PROJECT LOCATION

101

LOCATION MAP  
NO SCALE



VICINITY MAP  
NO SCALE

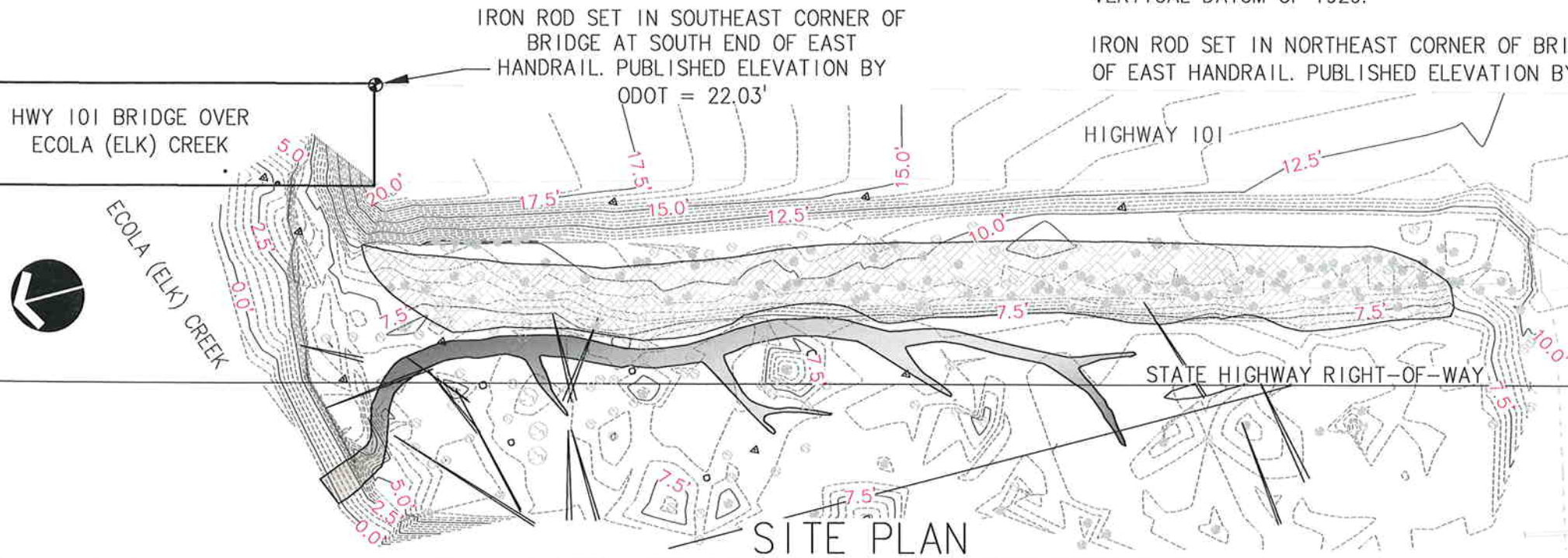
## SURVEY NOTE:

- THIS MAP DOES NOT CONSTITUTE A PROPERTY BOUNDARY SURVEY. TOPOGRAPHIC SURVEY MAP, DATED JULY 15, 2008 WAS OBTAINED FROM RONALD A. BUSH, PLS.
- ELEVATION CONTROL SHOWN FOR GRAPHICAL PURPOSES ONLY. FINAL GRADES SHALL BE DIRECTED BY FIELD SUPERVISOR AND ELEVATIONS VERIFIED BY CONTRACTOR.

## ELEVATION DATUM

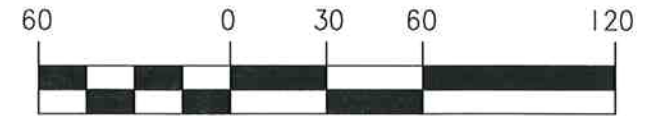
DRAWING ELEVATIONS BASED UPON BENCHMARK NUMBER N531 ESTABLISHED ON THE NATIONAL THE NATIONAL GEODETIC VERTICAL DATUM OF 1929.

IRON ROD SET IN NORTHEAST CORNER OF BRIDGE AT SOUTH END OF EAST HANDRAIL. PUBLISHED ELEVATION BY ODOT = 22.03' NGVD



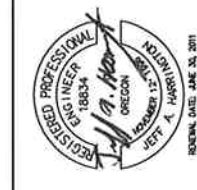
## LEGEND

- STUMP
- SPRUCE TREE
- ⊙ ALDER TREE
- △ TEMPORARY BENCHMARK
- ⊕ PERMANENT BENCHMARK
- DOWNED TREE
- XX.X' MAJOR CONTOUR (2.5')
- MINOR CONTOUR (0.5')
- NEW CHANNEL EXCAVATION
- BIOSWALE EMBANKMENT



SCALE: 1" = 60'  
DOUBLE SCALE FOR 8.5"x11" SHEET

NO.	DATE	BY	REVISION COMMENTS



**CREST**  
 ELK FLATS STREAM RESTORATION PROJECT  
 ECOLA CREEK AND HIGHWAY 101  
 COVER SHEET  
 CANNON BEACH, OREGON

**HLB Otak**  
 Incorporated  
 4253-A HWY 101 N.  
 SEASIDE, OREGON 97138  
 Phone: (503) 738-3425  
 FAX: (503) 738-7455  
 Internet: WWW.HLB-OTAK.COM  
 66726 C726P100.DWG  
 Project No. Drawing No.  
 1  
 Sheet No.  
 Copyright 2009 ©

N:\Project\66700\66726\DWG\C726P100.DWG Plotted: Sep 30, 2009 - 1:51pm By: kka